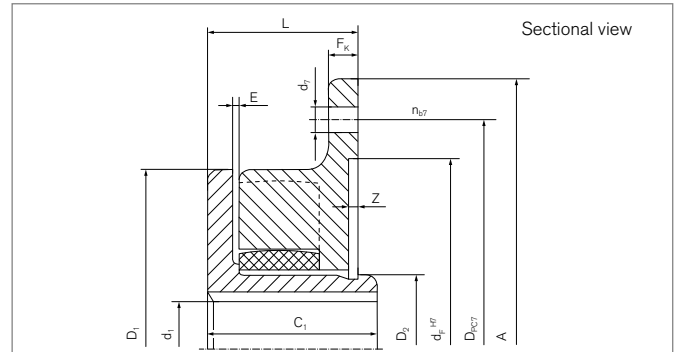
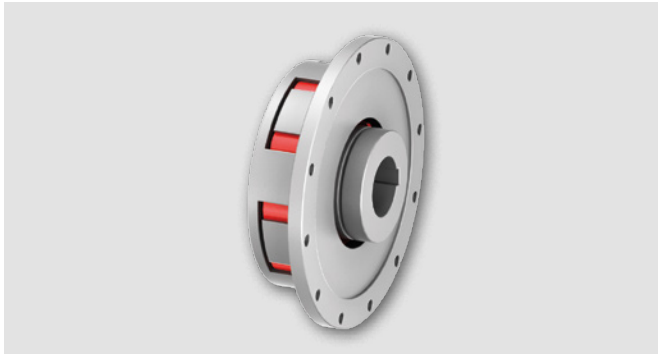


# Elastomer Jaw Couplings

## RINGFEDER® TNS SV

### Coupling with inner hub and claw flange



Identifier	Size	T <sub>KN</sub>	T <sub>Kmax</sub>	n <sub>max</sub>	d <sub>1kmax</sub>	A	D <sub>1</sub>	D <sub>2</sub>	C <sub>1</sub>	F <sub>K</sub>
		Nm	Nm	1/min	mm	mm	mm	mm	mm	mm
WS1410	100	70	210	7250	27	145	105	38	50	10
WS1412	125	128	385	6000	34	170	126	48	57	10
WS1414	145	220	660	5250	42	194	145	60	65	12
WS1417	170	340	1020	4500	58	220	170	82	75	14
WS1420	200	590	1770	3750	65	250	200	95	85	14
WS1423	230	900	2700	3250	70	290	230	102	90	14
WS1426	260	1400	4200	3000	90	335	260	130	110	18
WS1430	300	2090	6270	2500	105	385	300	147	130	24
WS1436-0650	360	3450	10350	2150	140	455	360	210	175	28
WS1436-0750		3450								
WS1440	400	4750	14250	1900	160	514	400	230	180	30
WS1440-0866		4750								

For further information see chapter „Introduction“ as well as chapter „Elastomer Jaw Couplings RINGFEDER® TNS Basic information“ in the Product Paper & Tech Paper „RINGFEDER® Elastomer Jaw Couplings“

To continue see next page

## Elastomer Jaw Couplings RINGFEDER® TNS SV

Identifier	Size	Z	d <sub>F</sub>	D <sub>PC7</sub>	n <sub>b7</sub>	d <sub>7</sub>	L	E	d <sub>be</sub>	G <sub>W<sub>ub</sub></sub>
		mm	mm	mm		mm	mm	mm	mm	kg
WS1410	100	2	100	128	6	9	42	2	42	1,7
WS1412	125	2	130	148	6	9	47	2	54	2,8
WS1414	145	4	150	172	6	9	55	2	66	4,3
WS1417	170	4	170	195	6	13,5	60	2,5	90	6,8
WS1420	200	4	195	228	8	13,5	65	2,5	100	10,4
WS1423	230	4	220	265	8	13,5	70	4,5	115	13,4
WS1426	260	4	265	310	12	13,5	85,5	4,5	150	22,8
WS1430	300	4	315	360	16	13,5	100	4,5	162	36,2
WS1436-0650	360	5	360	420	16	17,5	123	7,5	215	71,4
WS1436-0750		5	420	480	20	17,5	125		215	75,4
WS1440	400	5	420	480	20	17,5	125	7,5	250	94,9
WS1440-0866		6	485	555	12	22	125		250	99,5

### Explanation

<b>T<sub>KN</sub></b> = Nom. Transmissible torque	<b>D<sub>2</sub></b> = Outer diameter hub	<b>d<sub>7</sub></b> = Bore diameter
<b>T<sub>Kmax</sub></b> = Max. transmissible torque of the coupling	<b>C<sub>1</sub></b> = Guided length in hub bore	<b>L</b> = Total length
<b>n<sub>max</sub></b> = Max. rotation speed	<b>F<sub>K</sub></b> = Guided length in hub bore	<b>E</b> = Gap width between left and right component
<b>d<sub>1kmax</sub></b> = Max. bore diameter d <sub>1</sub> with keyway acc. to DIN 6885-1	<b>Z</b> = Depth of center value	<b>d<sub>be</sub></b> = Inner diameter elastic intermediate ring
<b>A</b> = Max. outer diameter	<b>d<sub>F</sub></b> = Center diameter	<b>G<sub>W<sub>ub</sub></sub></b> = Weight, unbored
<b>D<sub>1</sub></b> = Outer diameter	<b>D<sub>PC7</sub></b> = Pitch circle diameter of bore holes d <sub>7</sub>	
	<b>n<sub>b7</sub></b> = Quantity of bore d <sub>7</sub>	

### Ordering example

Identifier	Size	d <sub>1k</sub>	Further details
WS1436-0750	360	140	*

<sup>\*)</sup> Without any other specification, we deliver as a standard: with set screws and keyway acc. to DIN 6885-1, keyway side fit P9, bore tolerance H7

Further information on  
**RINGFEDER® TNS SV**  
 on [www.ringfeder.com](http://www.ringfeder.com)

#### Disclaimer of liability

All technical details and notes are non-binding and cannot be used as a basis for legal claims. The user is obligated to determine whether the represented products meet his requirements. We reserve the right carry out modifications at any time in the interests of technical progress.