

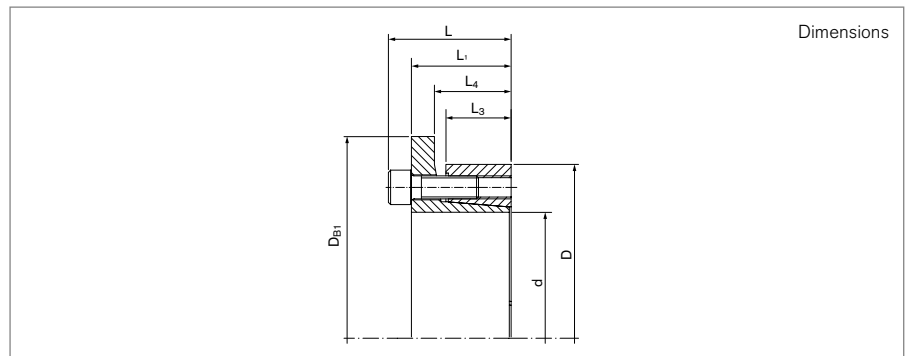
# Locking Assemblies

## RINGFEDER® RfN 7006

Two piece design with single taper



self-centering      without axial displacement      with low surface pressure



Locking Assembly dimensions									Transmissible torques or axial forces		Surface pressure		Locking screws		
d	d	x	D	D <sub>B1</sub>	L	L <sub>1</sub>	L <sub>3</sub>	L <sub>4</sub>	T	F <sub>ax</sub>	Shaft P <sub>w</sub>	Hub P <sub>N</sub>	n <sub>Sc</sub>	D <sub>G</sub>	T <sub>A</sub>
mm	inch				inch				ft-lbs	lbs	psi				ft-lbs
0.750	3/4	x	1.850	2.205	1.339	1.102	0.669	0.906	200	6290	31160	13500	5	M6	13
0.875	7/8	x	1.850	2.205	1.339	1.102	0.669	0.906	230	6290	28400	13500	5	M6	13
1.000	1	x	1.969	2.323	1.339	1.102	0.669	0.906	325	7640	30400	15500	6	M6	13
1.125	1 1/8	x	2.165	2.520	1.339	1.102	0.669	0.906	360	7640	28400	14200	6	M6	13
1.188	1 3/16	x	2.165	2.520	1.339	1.102	0.669	0.906	390	7640	27000	14200	6	M6	13
1.250	1 1/4	x	2.362	2.717	1.339	1.102	0.669	0.906	555	10300	30400	16200	8	M6	13
1.375	1 3/8	x	2.362	2.717	1.339	1.102	0.669	0.906	605	10300	27000	16200	8	M6	13
1.438	1 7/16	x	2.559	2.913	1.339	1.102	0.669	0.906	625	10300	28700	15900	8	M6	13
1.500	1 1/2	x	2.559	2.913	1.339	1.102	0.669	0.906	655	10300	27700	15900	8	M6	13
1.625	1 5/8	x	2.953	3.307	1.614	1.299	0.787	1.063	1180	15700	34900	19100	7	M8	30
1.750	1 3/4	x	2.953	3.307	1.614	1.299	0.787	1.063	1270	15700	32600	19100	7	M8	30
1.875	1 7/8	x	2.953	3.504	1.614	1.299	0.787	1.063	1330	15700	31200	18400	7	M8	30
1.938	1 15/16	x	3.150	3.504	1.614	1.299	0.787	1.063	1390	16600	29700	18400	7	M8	30
2.000	2	x	3.150	3.504	1.614	1.299	0.787	1.063	1390	16600	29200	18400	7	M8	30
2.125	2 1/8	x	3.346	3.701	1.614	1.299	0.787	1.063	1730	17100	31000	19100	8	M8	30
2.188	2 3/16	x	3.346	3.701	1.614	1.299	0.787	1.063	1770	17100	30400	19100	8	M8	30
2.250	2 1/4	x	3.543	3.898	1.614	1.299	0.787	1.063	1860	17100	28300	17700	8	M8	30
2.375	2 3/8	x	3.543	3.898	1.614	1.299	0.787	1.063	1950	17100	27000	17700	8	M8	30
2.438	2 7/16	x	3.740	4.094	1.614	1.299	0.787	1.063	2230	18000	29800	19100	9	M8	30
2.500	2 1/2	x	3.740	4.094	1.614	1.299	0.787	1.063	2290	18000	29100	19100	9	M8	30
2.563	2 9/16	x	3.740	4.094	1.614	1.299	0.787	1.063	2350	18000	28400	19100	9	M8	30
2.688	2 11/16	x	4.331	4.685	1.969	1.575	0.945	1.260	3530	29200	32000	19900	8	M10	61
2.750	2 3/4	x	4.331	4.685	1.969	1.575	0.945	1.260	3620	29200	31200	19900	8	M10	61
2.875	2 7/8	x	4.528	4.882	1.969	1.575	0.945	1.260	3690	29200	29000	18400	8	M10	61
2.938	2 15/16	x	4.528	4.882	1.969	1.575	0.945	1.260	3800	29200	28300	18400	8	M10	61
3.000	3	x	4.724	5.079	1.969	1.575	0.945	1.260	4050	29200	26800	17700	8	M10	61

To continue see next page

### Locking Assemblies RINGFEDER® RfN 7006

Locking Assembly dimensions									Transmissible torques or axial forces		Surface pressure		Locking screws		
d	d	x	D	D <sub>B1</sub>	L	L <sub>1</sub>	L <sub>3</sub>	L <sub>4</sub>	T	F <sub>ax</sub>	Shaft p <sub>w</sub>	Hub p <sub>n</sub>	n <sub>sc</sub>	D <sub>G</sub>	T <sub>A</sub>
mm	inch			inch					ft-lbs	lbs	psi				ft-lbs
3.250	3 1/4	x	4.921	5.276	1.969	1.575	0.945	1.260	4730	31500	29100	19100	9	M10	61
3.375	3 3/8	x	4.921	5.276	1.969	1.575	0.945	1.260	4880	31500	28300	19100	9	M10	61
3.438	3 7/16	x	5.118	5.472	1.969	1.575	0.945	1.260	4980	31500	27600	18400	9	M10	61
3.500	3 1/2	x	5.118	5.472	1.969	1.575	0.945	1.260	5130	31500	26800	18400	9	M10	61
3.750	3 3/4	x	5.315	5.669	1.969	1.575	0.945	1.260	6040	36000	28300	19900	10	M10	61
3.938	3 15/16	x	5.709	6.063	2.205	1.732	1.024	1.339	7450	38200	29700	21000	8	M12	107
4.000	4	x	5.709	6.063	2.205	1.732	1.024	1.339	7560	38200	29200	21000	8	M12	107
4.438	4 7/16	x	6.102	6.457	2.205	1.732	1.024	1.339	8110	38200	27500	19600	8	M12	107
4.750	4 3/4	x	6.496	6.850	2.205	1.732	1.024	1.339	10000	45000	29700	20600	9	M12	107
4.938	4 15/16	x	7.087	7.441	2.520	2.047	1.339	1.654	13400	56200	27900	19900	12	M12	107
5.000	5	x	7.087	7.441	2.520	2.047	1.339	1.654	14000	56200	27000	19900	12	M12	107
5.438	5 7/16	x	7.480	7.835	2.677	2.126	1.339	1.654	16100	60700	25700	18400	9	M14	170
5.938	5 15/16	x	7.874	8.228	2.677	2.126	1.339	1.654	18900	71900	26800	19900	10	M14	170
6.438	6 7/16	x	8.858	9.213	3.071	2.520	1.732	2.087	22300	76400	20300	15200	12	M14	170
6.938	6 15/16	x	9.252	9.606	3.071	2.520	1.732	2.087	23600	76400	19600	15200	12	M14	170

More sizes on request

### Explanation

<b>d</b> = Inner diameter (decimal notation)	<b>L<sub>3</sub></b> = Width of ring	<b>n<sub>sc</sub></b> = Quantity of screws
<b>d</b> = Inner diameter	<b>L<sub>4</sub></b> = Installation length up to collar	<b>D<sub>G</sub></b> = Thread
<b>D</b> = Outer diameter	<b>T</b> = Transmissible torque at given T <sub>A</sub>	<b>T<sub>A</sub></b> = Tightening torque of the clamping screws
<b>D<sub>B1</sub></b> = Collar outer diameter	<b>F<sub>ax</sub></b> = Transmissible axial force	
<b>L</b> = Overall length	<b>p<sub>w</sub></b> = Surface pressure on shaft at given T <sub>A</sub>	
<b>L<sub>1</sub></b> = Overall length (without screws)	<b>p<sub>n</sub></b> = Surface pressure on hub at given T <sub>A</sub>	

### Ordering example

Locking assembly	d	D
RfN 7006	2.188	3.346

#### Technical Information

- Surface finishes: Shaft and hub bores R<sub>a</sub> ≤ 1,6 μm
- Tolerances: Shaft: h8 · Hub: H8

Further information on  
**RINGFEDER® RfN 7006**  
 on [www.ringfeder.com](http://www.ringfeder.com)

#### Disclaimer of liability

All technical details and notes are non-binding and cannot be used as a basis for legal claims. The user is obligated to determine whether the represented products meet his requirements. We reserve the right carry out modifications at any time in the interests of technical progress.